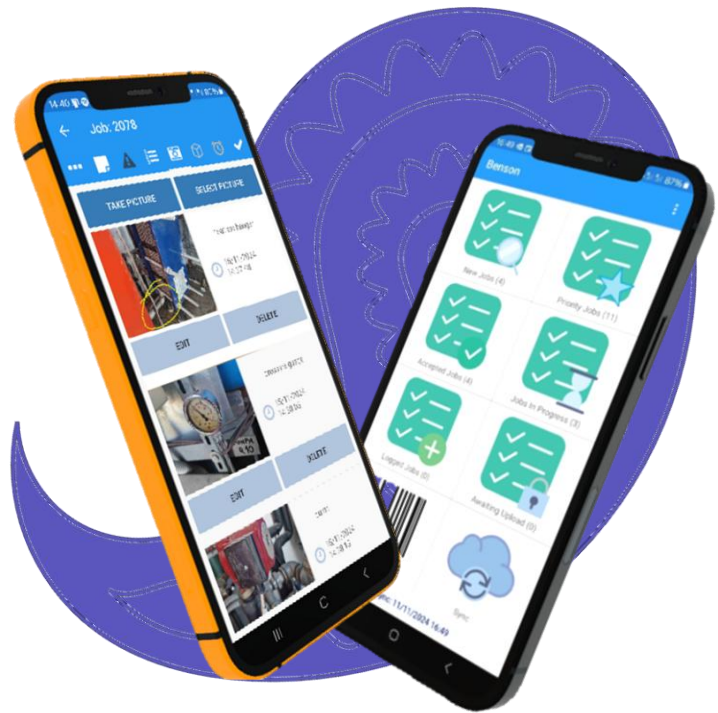




JobPalthe

**App that
simplifies job
management**



**Multiple jobs, Work Requests,
access to documentation, timesheets
& expenses, all in the app**

JobPal is the leading app for maintenance and mobile engineers to perform tasks, raise work requests and conduct planned maintenance. It was created in 2016 for engineers to work independently or out of the office.

- + >25 years providing asset care solutions**
- + >2000 users**
- + >5000 jobs every day**



Everything you and your engineers need

Instant job allocation to engineers. Fully flexible surveys including

- Photos (with annotation)
- Option selection
- Meter readings
- Follow up job creation
- Dictation
- Job Handover

Integrated with phones navigation.

Stock In/Out

Barcode scanning

The screenshot shows the 'Asset T935' screen in the JobPal app. At the top, there's a blue header with a back arrow and the asset name. Below it, the 'Step Name' is 'Asset T935'. A task description reads: 'Verify Asset T935 - 20 Oz.-Inch Torque Controlled Driver'. To the right of this text is a grey 'SCAN' button. Below the task description, there's a note: 'Perform maintenance as per GMP004.' and a specific instruction: 'Check torque at 20 oz-in (1.25 lb in)'. Further down, it says 'Ensure measured value is at or within +/- 2.89 oz-in (+/- 0.18 lb in)'. There's a 'Measured value:' field with a text input area. Below that is a 'Within tolerance?' toggle switch, which is currently turned off. Then, there's an 'Analyser used:' field with a 'Select Item' button. At the bottom, it shows 'Analyser Cal. due date: 16/11/2024'. The bottom of the screen has a black navigation bar with three icons: a list, a home icon, and a back arrow.

The screenshot shows the 'Step 1' screen in the JobPal app. At the top, there's a blue header with a back arrow and the step name. Below it, the 'Step Name' is 'Step 1'. A section titled 'Select the task/s requiring a Permit' contains a list of tasks with 'YES' and 'NO' buttons and a checkmark icon. The tasks are: Electrical, Work at Heights, Hot Works, Confined Space, COSHH / Lone Working, and Services to be Isolated. Below this list is an 'Other' field with a 'Select Item' button. At the bottom, there's a note: 'Now complete the sections in the Steps screen that have been identified as required.' The bottom of the screen has a black navigation bar with three icons: a list, a home icon, and a back arrow.

Time & expense management

Risk Assessments

Meter Readings

Health and Safety

JobPal even works when your
engineers are not connected to the
internet!

Features at a glance

For the Engineer	
Mobile App that works when not connected	YES
Perform Stock Takes	YOU BET
Move assets from one line to another	ABSOLUTLY
Record Deliveries	CERTIANLY
Access Drawings and manuals for the selected Asset	OF COURSE (but you do need access to the internet for this)
See history of asset repairs	AS ABOVE
See list of parts previously used on asset	DEFINITELY
Take photos and annotate them	INDEED
Dictate notes and observations	AFERMATIVE
Create follow up jobs so that current job can be closed	CATEGORICALLY
Pass your part completed job to the next guy	UNQUESTIONABLY
For the Maintenance Manager	
Simple Excel Input of all data	YES SIREE
Review history of Asset movements	SURE THING
At a glance review of line and Asset health	EMPHATICALLY
Compare Run Time Hours with Real Life	POSITIVELY
Root Cause Analysis based on engineers, not production opinion	EXPLICITLY
Fully Configurable view of Asset Structure	INDUBITABLY
Library of more than 200 audited templates for asset maintenance, Permits to Work, Risk Assessments and Breakdowns	100%
Easily create templates the way you want	INCONTROVERTIBLY
Self-generating Planned Maintenance jobs	OH YEAH BABY!
Multi asset multi route periodic checks	WOW!
Integration with CBM systems	SURE (Subject to any development requirement)
For the Purchasing Manager	
Auto pick stock to be replenished based on variety of metrics	YEP
Auto create PO's/Requisitions per supplier	NO PROBLEM
History of Procurement including best prices	UNEQUIVOCALLY
For the Quality Manager	
Dedicated checklists and workflows	OBVIOUSLY
Reports for audits	INDEED
For the Compliance Manager	
Unlimited asset attributes	UNDENIABLY
Parent/Child Assets/Assemblies	IRREFUTABLY
Version management	INCONTESTABLY
For the Finance Team	
FIFO Stock reports	UNDENIABLY
Integration to company Financials e.g. SAP, Syspro, Oracle, Sage, Nav	NATURALLY (Subject to any development requirement)

Fully customisable surveys

- + Permit to Work
- + LOTO procedure
- + Vehicle checks
- + Risk Assessment

20:01 Please complete the following T...
Hazard Score = 7
Do you have the correct PPE? YES NO
Do you have the necessary permits? YES NO
Have you got a clear plan in mind? YES NO
Spot the Hazards
Will I be operating equipment with the guards removed? YES NO
Does the task involve hazardous materials? YES NO
Will I be performing a task without a specific isolation procedure? YES NO
Will I be working at heights? YES NO
Access the risks
What is the consequence associated with the task? Low
What is the probability of injury? Occasional

20:05 Job: 2824
Have you left the area clean and Tidy and removed all Tools?
Engineer Signature GET SIGNATURE
16/11/2024 20:05:07 Donald
Supervisor Signature GET SIGNATURE
16/11/2024 20:05:30 G. Hynes
COMPLETED PART COMPLETED
PART COMPLETE + ASSIGN

Just some of the checklists in our library of forms.
Create as many of your own forms as you need.

Book for free demo today and talk to one of our product experts who will show you how JobPal can help your business.

- Zoom or Teams
- Tailored to your business

JobPal is designed to be used with the JobPal Maintenance Management Solution, the award winning, industry leading web solution from RGC Technologies Ltd



info@rgc.ie, www.jobpal.ie, +353 1 663 6999